

PRODUCT CATALOG 2026 · EDITION 01

One platform. The whole fleet.

Fleet operations, intelligent routing, preventive maintenance, regulatory compliance, driver payroll, and accounting — built for carriers operating 5 to 200 trucks across the DACH region and Europe.

6

INTEGRATED SYSTEMS

40⁺

PRODUCTION FEATURES

20%

FUEL COST REDUCTION

8^h

SAVED PER WEEK

THE PROBLEM

Your fleet is bleeding money — every day.

60% of small and mid-sized carriers still run on Excel, WhatsApp, and gut instinct. The cost is staggering. Here is what you are losing right now.

30%

Empty miles

Nearly a third of all truck-km carry zero cargo. No load matching, no backhaul optimisation.

€ 760 /h

Breakdown cost

Unplanned breakdowns cost the repair, the load, the customer, and driver trust. No schedule means no prevention.

25 staff

Manual data entry

A 50-truck fleet employs 25 office staff just for data entry. Orders, quotes, portal updates. All automatable.

€ 16k +

Compliance fines

Tachograph violations, HOS breaches, missed inspections. One audit without records and your fleet gets grounded.

Zero

Real-time visibility

Where is truck 17? When will load 4892 arrive? Without tracking, every answer requires a phone call.

60 days

Payment delays

Manual invoicing takes days. Clients pay in 30–60 days. Without factoring, small carriers drown in cash flow.

THE TRANSFORMATION

Before vs. After RouteWerk.

● WITHOUT ROUTEWERK

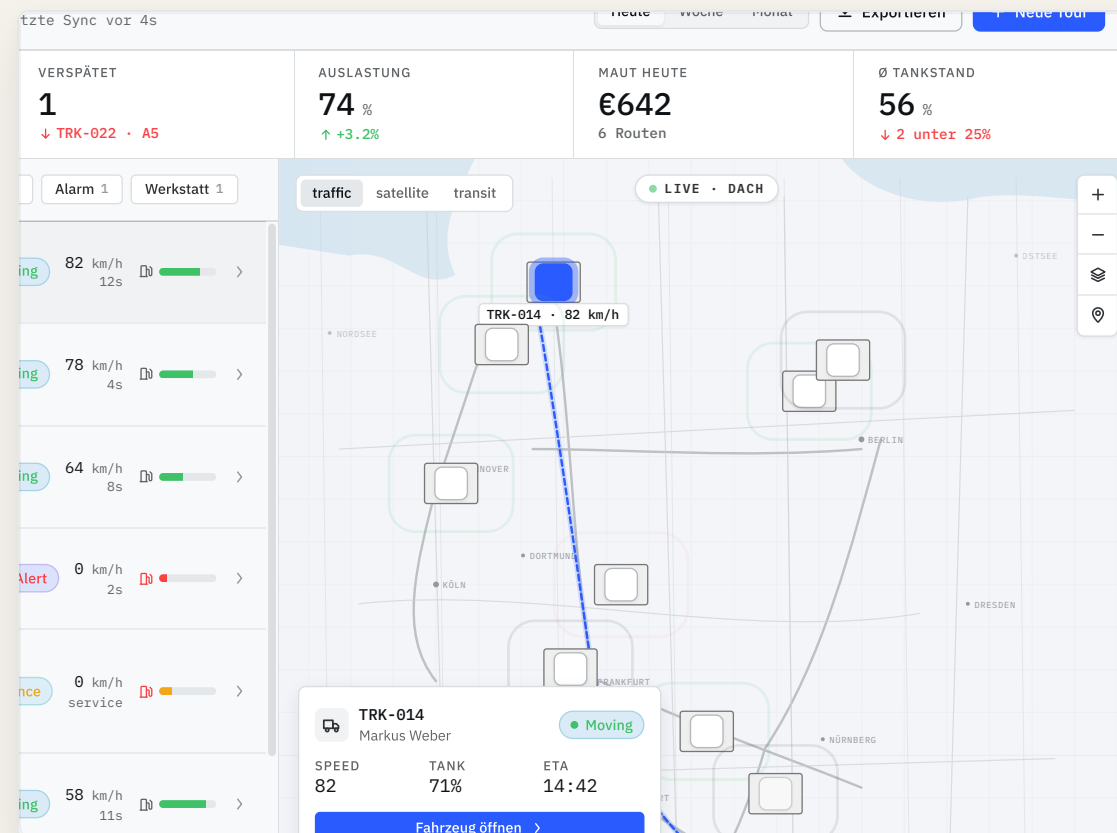
- ✗ Dispatch by phone — jobs double-booked
- ✗ Routes planned on paper maps
- ✗ Maintenance in notebooks — surprise breakdowns
- ✗ Invoices typed in Word — pay takes weeks
- ✗ Tachograph data on USB — or forgotten
- ✗ Friday payroll in Excel — errors weekly
- ✗ "Where is my load?" → another phone call
- ✗ Empty return trips — no backhaul

● WITH ROUTEWERK

- ✓ One-click dispatch · automated alerts
- ✓ AI multi-stop routing · 20% fuel savings
- ✓ Preventive maintenance · zero surprises
- ✓ Auto-generated invoices on POD
- ✓ Tachograph .DDD downloaded automatically
- ✓ Automated payroll with settlement PDFs
- ✓ Customer portal · self-service tracking
- ✓ Load board · backhaul cargo instantly

SCREEN · DISPATCH · LIVE MAP

One screen.
Every truck, every load — DACH-wide.



TRK-014 · HAMBURG → MÜNCHEN · LIVE

ETA 14:42

UPDATE
every 30s

ETA ACCURACY
±2 min

ONE-CLICK
dispatch

PLATFORM · 6 INTEGRATED SYSTEMS

Six systems. One platform.

No competitor under €800/month covers all six. Full-stack carrier TMS — operations, intelligence, maintenance, compliance, payroll, and accounting.

SYS
01

Trucking Operations

The operational core. Manage your entire fleet from a single dashboard.

- Fleet management — trucks, trailers, documents
- Driver profiles, licence tracking, HOS logs
- Load management with capacity matching
- One-click dispatch with automated alerts
- Real-time GPS tracking with ETA prediction
- Auto-generated invoices with proof of delivery

SYS
02

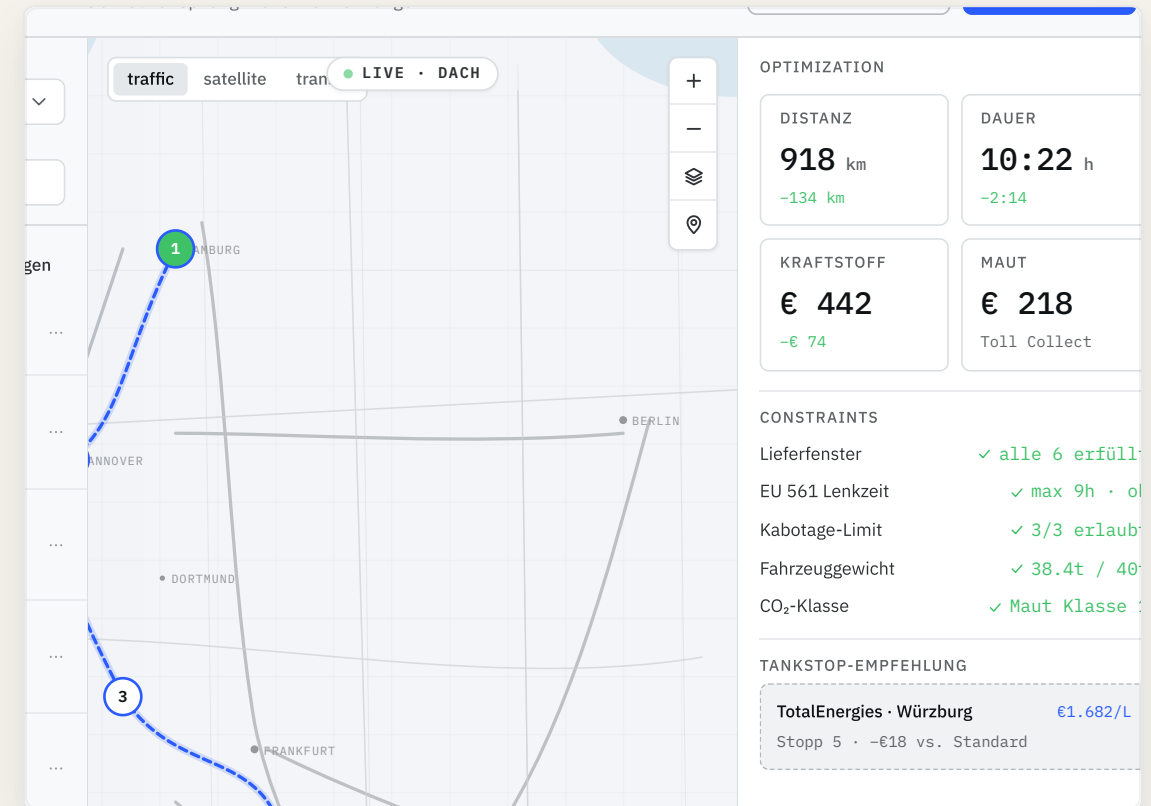
Routing & Intelligence

AI-powered route optimisation, dynamic rerouting, fuel savings.

- Multi-stop optimisation in seconds
- Dynamic rerouting for traffic and weather
- Geofencing with detention alerts
- Fuel optimisation — cheapest stop finder
- Last-mile app with signature and photo
- Google Maps and HERE API integration

DETAIL · OPTIMISATION PANEL

6 stops · 6 delivery windows.
Optimised in 3.2 seconds.



TOUR R-2458 · CONSTRAINTS & COST

MAUT, EU 561, CABOTAGE

DISTANCE SAVED

-134 km

vs. original order

COST SAVED

-€74

per tour, fuel + toll

SYSTEMS 03 + 04

Keep them moving. Legally.

SYS 03

Maintenance

Prevent breakdowns. Track repairs. Manage parts. Stay inspection-ready.

- Preventive scheduling by mileage and calendar
- Digital work orders with full vehicle history
- Parts inventory with stock and reorder alerts
- Digital DVIR — pre-trip and post-trip inspections
- Cost and downtime analytics per vehicle
- Push, SMS, email reminders for due services

SYS 04

ELD & Compliance

Legal protection built-in. ELD + EU Tachograph. HOS, IFTA, driving-time rules.

- Integration with 100+ ELD providers
- EU Smart Tachograph Gen2V2 data parsing
- Automated HOS / EU 561/2006 violation alerts
- IFTA fuel tax across US & Canadian jurisdictions
- Real-time GPS from ELD into dispatch
- BAG and DOT audit-ready compliance reports

DETAIL · SERVICE SCHEDULE

Every service due, ranked.
Nothing slips through.

Live tracking | ↓ TRK-005 · Ölwechsel | 2 Bremsenprüfung | ↑ -18% vs. Q1

ANSTEHENDE WARTUNG · NACH FÄLLIGKEIT						
FAHRZEUG	ARBEIT	FÄLLIG	TERMIN	TEILE	KOSTEN	
● TRK-014 M. Weber	Bremsenprüfung	in 1.240 km	26. Mai	Bremsbeläge VA	€ 340	P
● TRK-022 J. Krüger	TÜV / HU	in 8 Tagen	30. Mai	—	€ 280	P
● TRK-005 D. Voigt	Ölwechsel	überfällig	heute	Filter, Öl 25L	€ 220	P
● VAN-031 L. Hoffmann	Inspektion 80k	in 2.400 km	1. Juni	Service-Kit	€ 480	P
● TRK-018 S. Becker	Reifenwechsel	in 5.800 km	10. Juni	Continental x8	€ 1.620	P
● VAN-044 T. Lang	Klima-Wartung	in 12 Tagen	3. Juni	Kältemittel	€ 140	P

WERKSTATT · 1 OVERDUE · 5 DUE THIS WEEK

-18% DOWNTIME VS. Q1

PRE-TRIP DVIR
digital

PARTS INVENTORY
live

REORDER
auto

SYSTEMS 05 + 06

Pay them. Bill them. Close the books.

SYS 05

Driver Payroll & Settlements

End Friday payroll nightmares. Configure pay, auto-calculate, generate settlement PDFs.

- Pay by mile, load, hour, or percentage
- Automated weekly / biweekly calculations
- Settlement PDFs with deductions and net pay
- Fuel-card auto-deduction from ELD data
- Separate owner-operator settlement flows
- Full audit trail for every pay period

SYS 06

Accounting & Integrations

Connects to what you already use. QuickBooks, factoring, load boards, open API.

- QuickBooks Online & Desktop — two-way sync
- Factoring — OTR, RTS, Triumph same-day pay
- DAT Power & Truckstop.com load boards
- German Maut toll cost via Toll Collect API
- Open REST API with webhooks for ERP / WMS
- TimoCom load board for the DACH market

DETAIL · SETTLEMENT PDF

Friday payroll — done
in 0.4 seconds, not 4 hours.

842	€ 4.218 ↓ auto ELD	€ 17.420 Banküberweisung Mi
-----	-----------------------	--------------------------------

STATUS

4	Genehmigt	✉
1	Genehmigt	✉
8	Genehmigt	✉
5	Entwurf	✉

ABRECHNUNGS-PDF · M. WEBER

Routewerk Nr. S-21-001
ABRECHNUNG · KW 21 · 2026 21.05.2026

FAHRER
Markus Weber ZEITRAUM
12.05 – 18.05.2026
D-101 · TRK-014 5 Schichten · 32.0h

Position	Anzahl	Satz	Betrag
Kilometer-Vergütung	3.210 km	€ 0,98/km	3.145,80
Wartezeit-Pauschale	4,5 Std	€ 18,00/h	81,00
Spesen DE (Tagessatz)	5 Tage	€ 28,00	140,00
Übernachtungs-Pauschale	4 Nächte	€ 8,00	32,00
Bonus pünktliche Lieferung	6/6	€ 18,00	108,00
BRUTTO			3.506,80
Tankkarten-Abzug (DKV)			-712,40
Vorschuss			-200,00
NETTO AUSZAHLUNG			€ 2.594,40

KW 21 · M. WEBER · AUTO-GENERATED

DKV FUEL-CARD DEDUCTIONS

BRUTTO / WOCHE
€ 22,054

AUDIT TRAIL
complete

FEATURE SPOTLIGHT

Real-time fleet visibility.

See every truck on a live map. Know exact ETAs. Get instant alerts when a driver enters a geofenced zone. Customers track their own shipments through a self-service portal – zero phone calls.

30s

GPS UPDATE

< 2m

ETA ACCURACY

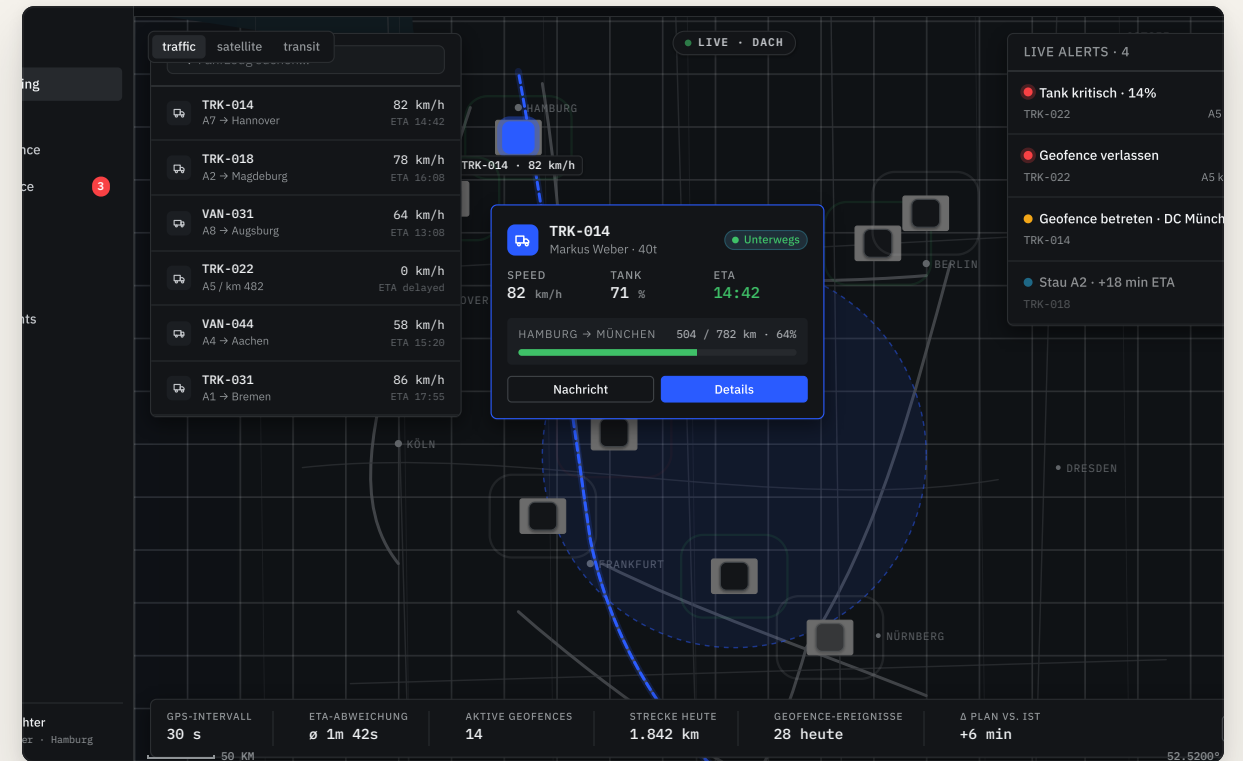
24/7

PORTAL ACCESS

- ✓ GPS every 30s
- ✓ Customer self-track
- ✓ Arrival notifications

- ✓ Geofence alerts
- ✓ Live ETA prediction
- ✓ Trip replay

DETAIL · LIVE MAP & FOCUSED VEHICLE



LIVE · DACH · 6 VEHICLES IN MOTION

4 ACTIVE ALERTS · LIVE

FEATURE SPOTLIGHT

AI-powered route engine.

Stop planning routes manually. The engine calculates the optimal multi-stop path considering distance, traffic, fuel costs, toll charges, and delivery windows. Dynamic rerouting adjusts in real time.

20%
FUEL REDUCTION

€200k
ANNUAL SAVINGS

< 3s
OPTIMISATION

- ✓ Multi-stop in seconds
- ✓ Live traffic rerouting
- ✓ Delivery windows

- ✓ German Maut toll calc
- ✓ Cheapest fuel finder
- ✓ CO₂ class scoring

DETAIL · VARIANT COMPARISON

The screenshot displays a comparison between two route variants. On the left, the 'Empfohlen' (Recommended) route is highlighted with a score of 96/100. It features a solid blue line on a map and a detailed metrics table. On the right, the 'Kürzeste' (Shortest) route has a score of 84/100 and is shown with a dashed green line. A sidebar on the left lists various platform features like 'Routes', 'Live tracking', 'Maintenance', 'Compliance', 'Drivers', 'Settlements', and 'Reports'. The 'Empfohlen' variant includes a 'Details' link and an 'Auswählen' (Select) button.

Metric	Empfohlen (Score 96/100)	Kürzeste (Score 84/100)
DISTANZ	782 km	758 km
FAHRZEIT	8h 22m	-
KRAFTSTOFF	€ 412	€ 398
MAUT	€ 184,20	-
CO ₂	924 kg	902 kg
STOPPS	1 · Würzburg	-

EMPFOHLEN · VS. SHORTEST, VS. FASTEST

SCORE 96 / 100

EU & GERMANY COMPLIANCE

Built for European regulations from day one.

Not a US product with EU bolted on. Native support for Smart Tachograph, GDPR, GoBD, Maut toll and cabotage tracking.

SMART TACHOGRAPH GEN2V2

Automatic .DDD download, EU 561/2006 enforcement, pre-violation alerts. Mandatory for trucks > 3.5 t since Aug 2025.

GDPR & BDSG

All data in AWS Frankfurt (eu-central-1). DPA included. Driver-data isolation. 72-hour breach workflow.

GOBD AUDIT ARCHIVE

Invoices, delivery notes, transport orders archived in immutable format for 10 years per German fiscal code.

MAUT · TOLL COLLECT

Real-time toll cost per route. CO₂-linked surcharges since July 2024. True cost visibility before departure.

CABOTAGE TRACKING

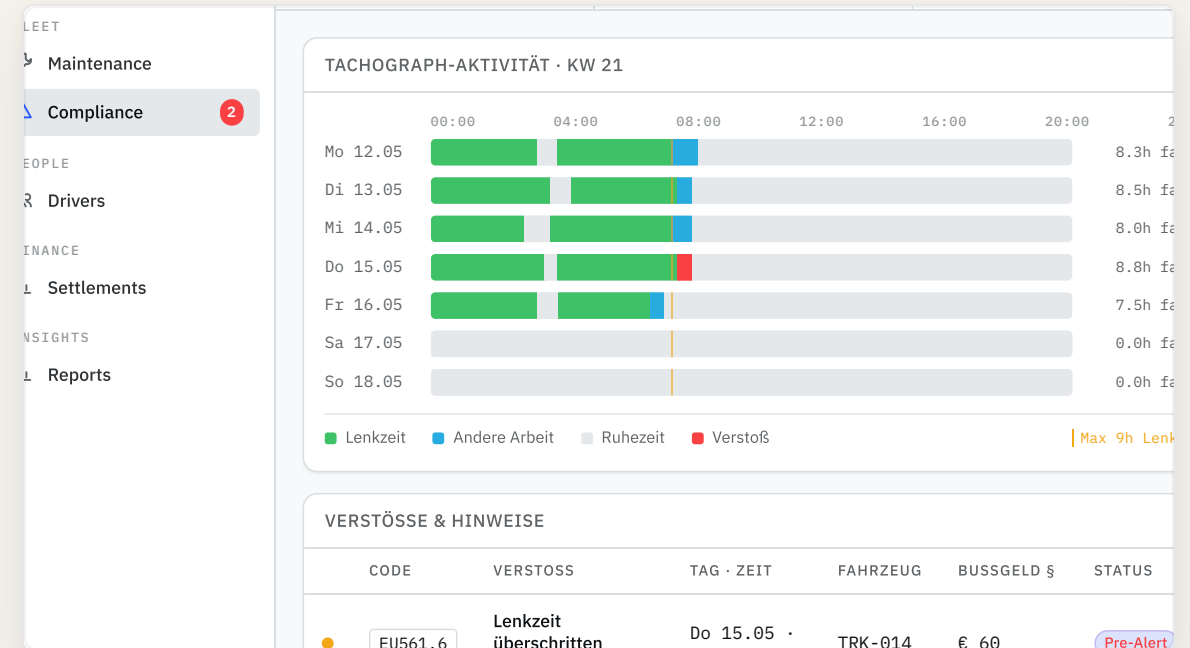
Auto-count of foreign deliveries. Alerts before exceeding the 3-op / 7-day limit. Prevents € 10k+ fines.

IFTA & EUROVIGNETTE

Auto-calculate fuel tax across US states and Canadian provinces. EU Maut & Eurovignette toll reporting native.

DETAIL · TACHOGRAPH TIMELINE

EU 561 driving time, visualised. Pre-violation alerts, not fines.



KW 21 · M. WEBER · TRK-014

1 PRE-VIOLATION · AUDIT-PACK READY

.DDD DOWNLOAD
automatic

CABOTAGE
auto-counted

TRANSPARENT PRICING

All-inclusive. No hidden fees.

GPS, support, reports, and updates included in every plan. What you see is what you pay.

<div style="text-align: center;"> <p>STARTER</p> <h2>€149</h2> <p>per month · up to 10 trucks</p> <hr/> <ul style="list-style-type: none"> ✓ Fleet & driver management ✓ Basic dispatch ✓ Real-time GPS tracking ✓ Basic route planning ✓ Invoice generation + POD ✓ Email & chat support <div style="border: 1px solid black; padding: 5px; width: fit-content; margin: 10px auto;">START FREE TRIAL</div> </div>	<div style="text-align: center;"> <p style="background-color: #4a5568; color: white; padding: 2px 5px; border-radius: 5px;">MOST POPULAR</p> <p>GROWTH</p> <h2>€399</h2> <p>per month · up to 30 trucks</p> <hr/> <ul style="list-style-type: none"> ✓ Everything in Starter ✓ Full maintenance module ✓ Multi-stop optimisation ✓ Fuel cost optimisation ✓ ELD / tachograph integration ✓ HOS compliance ✓ Driver payroll & settlements ✓ Priority support <div style="background-color: #4a5568; color: white; padding: 5px; width: fit-content; margin: 10px auto;">START FREE TRIAL</div> </div>	<div style="text-align: center;"> <p>BUSINESS</p> <h2>€799</h2> <p>per month · up to 75 trucks</p> <hr/> <ul style="list-style-type: none"> ✓ Everything in Growth ✓ QuickBooks integration ✓ Factoring connections ✓ Load board (DAT, TimoCom) ✓ Customer portal ✓ Analytics & KPI dashboards ✓ Open REST API ✓ IFTA / Maut reporting <div style="border: 1px solid black; padding: 5px; width: fit-content; margin: 10px auto;">START FREE TRIAL</div> </div>	<div style="text-align: center;"> <p>ENTERPRISE</p> <h2>Custom</h2> <p>per month · unlimited trucks</p> <hr/> <ul style="list-style-type: none"> ✓ Everything in Business ✓ Custom integrations ✓ Dedicated account manager ✓ SSO & advanced users ✓ Multi-location support ✓ Custom reporting ✓ SLA with uptime guarantee ✓ On-site onboarding <div style="border: 1px solid black; padding: 5px; width: fit-content; margin: 10px auto;">CONTACT SALES</div> </div>
--	--	---	---

REVENUE POTENTIAL

100 customers on Growth (€399/month) = **€ 39,900 / month** = **€ 478,800 / year** in recurring revenue. Target 500+ customers within 3 years. Conservative Year 3 ARR: **€ 3,024,000.**

INCLUDED IN EVERY PLAN

Platform-wide capabilities.

ROLES & PERMISSIONS

Admin, dispatcher, driver, customer views. Multi-location support.

REPORTS & DASHBOARDS

Customisable KPIs. Export to Excel and PDF. Fleet health analytics.

SMART NOTIFICATIONS

Push, SMS, email for maintenance, HOS warnings, deliveries, invoices.

DRIVER MOBILE APP

iOS & Android. Receive jobs, capture POD, digital DVIR. Works offline.

CUSTOMER PORTAL

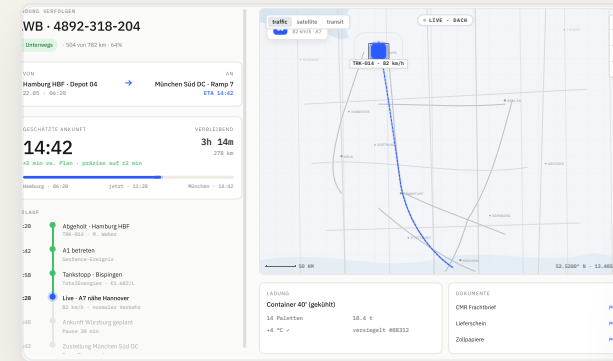
Branded login for clients to track shipments and download invoices.

GERMAN-LANGUAGE UI

Full DE interface, support, contracts, and DPA. Built for DACH.

CUSTOMER PORTAL

Branded shipment tracking · your customers, self-service.



PORTAL · AWB 4892-318-204 · LIVE ETA · BRANDED LOGIN

DRIVER MOBILE

iOS / Android · works offline.





GET STARTED

START FREE TRIAL →

CONTACT

sales@routewerk.com
www.routewerk.com

HEADQUARTERS

Eschborn, Frankfurt

DATA CENTRE

AWS eu-central-1

CERTIFICATIONS

ISO 27001 · SOC 2